

Napili Bay Resort, Unit 206 Details

PID : 3
Price : 150 USD
Sleeps : 2
Baths : 1
Country : USA
Region : Maui, Hawaii
Town : Lahaina

Napili Bay Resort, Unit 206 Description

Unit 206 (as seen on the VRBO Website)

is located on the top floor of the Napili Bay Resort near the center of the Oceanfront Building and is a popular choice of travelers. The unit offers a private lanai and a fully equipped kitchen with a dishwasher. The bath is bright and offers a walk-in shower with a separate vanity area and ceiling fan. The living space offers a King-sized bed and couch, full size dresser, inside glass top eating table, Flat Screen Television, DVD/CD player and free wireless High Speed Internet.

You can also sit at the tall eating table with barstool chairs out on the lanai and enjoy the views of the Napili Bay beach, Pacific Ocean and the islands of Molokai and Lanai. Unit 206 sleeps 2 and is perfect for any couple looking for a romantic island getaway.

Napili Bay Resort
33 Hui Drive, Apt. 206
Lahaina, Maui, Hawaii 96761

Studio Amenities

Top Floor Condo, King Size Bed, Ceiling Fan, Color Cable TV with DVD, Portable phone and answering machine, Free Local Calls, Location information guide and books, Dining Table and Chairs

Kitchen Amenities

Fully equipped kitchen, Stove, refrigerator, freezer, Dishwasher, Toaster, blender, coffee maker, Wine and champagne glasses, Microwave, Place settings for at least four

Bath and Beach Amenities

Walk-in Shower, Separate Vanity with Sink, Ceiling Fan, Full bath towel sets, Extra bed linens, Blow dryer, Beach chairs, beach towels and boogie board

Napili Bay Resort, Unit 206 Rental Conditions

Deposit and Payment

*A non-refundable deposit of 20% of the total rental amount must be received to confirm a reservation*Full payment of the rental balance is required no less than 30 days prior to the check-in date.*A security deposit of \$250.00 is also required and will be credited back within 14 days of checkout based on satisfactory condition of the condo.

Cancellations

*Cancellations made more than 60 days prior to the check-in date can have the deposit applied to a stay at the same unit within one year of the original check-in date.

*Cancellations made less than 60 days prior to the check-in date will forfeit all deposits

*Cancellations made less than 30 days prior to the check-in date will forfeit all deposits and rental balance due payments.

*Trip insurance is highly recommended.

Cleaning Fees

All stays are subject to a one-time cleaning fee of \$85.00. Interim cleanings or daily maid service can be scheduled if requested. Long stays (14 days or longer) are encouraged to schedule an interim cleaning.

Check-In / Check-Out

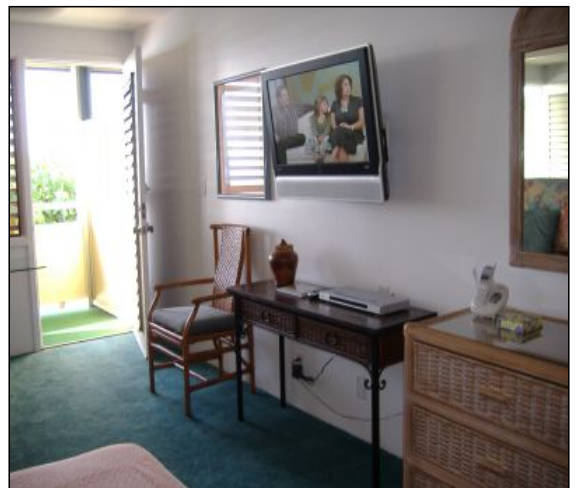
Check-in time is at 3:00 p.m.

Check-out time is at 11:00 a.m.

General

*Please leave room keys in the condo. If a key is lost you will incur a \$25.00 replacement fee.

*All condos are non-smoking units. If you need to smoke, please do so in the designated area



near the BBQs, not on walkways or near the buildings.

*Please do not move items between condos. The Napili Bay condos are individually owned and equipped with their own unique contents.

*The rental occupancy must be enforced. Violation results in loss of all deposits, immediate eviction from the Napili Bay Resort.

*There is a \$15.00 charge for each missing beach or bath towel.

*No pets allowed

Rates

Rates are valid through the end of 2009

Rates are in US dollars and are subject to Hawaiian taxes (11.41%)

Rates are for two guests per unit

A \$250.00 security deposit is required for all stays

No minimum nightly requirement

All stays have a cleaning fee of \$85.00

All rates are set once reservation is confirmed

Napili Bay Resort, Unit 206 Property owner

Name : Deanna Schaefer

Phone Number : 808.665.5742 or 503.803.9064 (cellular)

Email : deanna@paradisehawaiiancondos.com

Napili Bay Resort, Unit 206 Prices

Low season : 150 USD

Normal : 150 USD

High season : 165 - 185 USD

To see more details please [click here](#)